



WASATCH SOFT RIP™

DIGITAL PRINTING EXCELLENCE

ELEGANT SIMPLICITY

DIGITAL PRINTING EXCELLENCE

Wasatch is sophisticated software made easy. With simple setup, intuitive workflow, and powerful print controls, SoftRIP saves you time and money while producing excellent quality color. Whatever your printing goals, you will succeed with SoftRIP.



Superior Color

SoftRIP is widely known as the best RIP for achieving high quality color. Our exclusive Precision Stochastic Screens Halftone Method achieves excellent color reproduction with perfectly smooth gradients.

Beginners get great color out of the box with fully plug-and-play imaging configurations and fast setup. Pick the printer, pick the Imaging Configuration, and you're ready to RIP. Even users with minimal RIP experience will produce expert results quickly.

For the advanced user, SoftRIP has the most advanced arsenal of color tools available in any RIP. With intricate controls and innovative tools necessary to implement even the most complex color workflows, SoftRIP is the RIP that color experts choose most.

**EXCELLENT
COLOR TOOLS**
for every level
OF EXPERTISE

THE MOST INNOVATIVE RIP on the MARKET TODAY

Energize Your Workflow

No matter how large or complex your production environment, SoftRIP has the workflow tools to give you complete control. SoftRIP can manage any print environment from a single printer to a complex multiple device production plant.

Save Time and Money

SoftRIP pays for itself quickly in saved time and media. Most RIPs bundled provided with inkjet printers include only the basic features necessary to drive the printer. Only a quality RIP like SoftRIP gives you the tools you need to save thousands of dollars of media over the long haul.

Leverage the Power Across Your Network

SoftRIP's power isn't limited to the RIP station. Any PC or Mac on your network can use SoftRIP to print using a regular web browser. SoftRIP's server tools are simple to setup on networked workstations and even easier to use.

333 South 300 East
Salt Lake City, UT 84111, USA

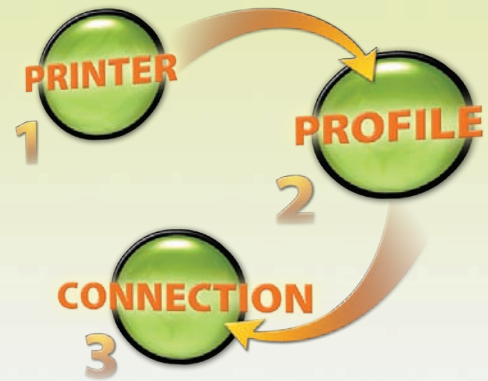
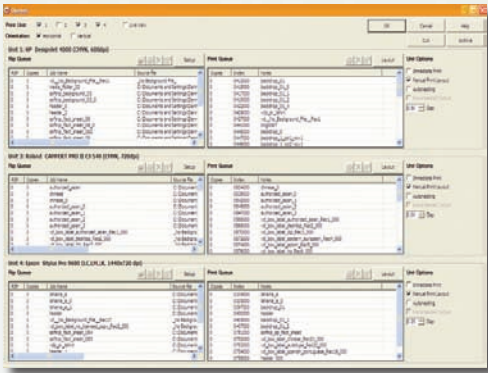


+1.801.575.8043
800.894.1544

www.wasatch.com/sr.html

EASIEST RIP ON THE MARKET

With SoftRIP, setup is easy as 1-2-3. Pick your printer, your profile, and your physical connection in the industry's easiest setup screen and you're ready to RIP. If your image file needs preflight modifications, SoftRIP gives you easy workflow tools to get your job ready for printing. Rotating, resizing and mirroring are a breeze and the live preview display updates nearly instantaneously.



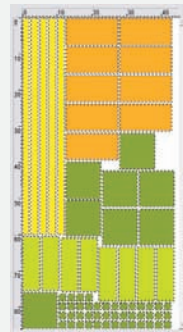
MORE CONTROL LESS WORK

Wasatch can manage any print environment with ease. SoftRIP's Master Queues screen helps you keep your production on track with a single glance, while giving you fast access to tools that save you time, media, and aggravation. Drag and drop jobs between queues, archive RIP'd jobs, manage nesting options or preview images. It's all just a click away with SoftRIP Master Queues.

SMART NESTING FOR BIG SAVINGS

There is no one layout option that works best for all users. Wasatch SoftRIP provides you with automatic Smart Nesting that creates layouts based on your printing objectives. Whether your top priority is conserving expensive media, trimming time, or finding a compromise between time and media savings SoftRIP has a solution for your nesting needs.

TIGHTEST FIT



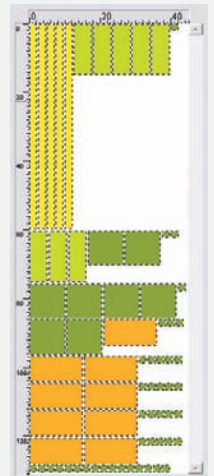
Saves the most media.

EASY CUT

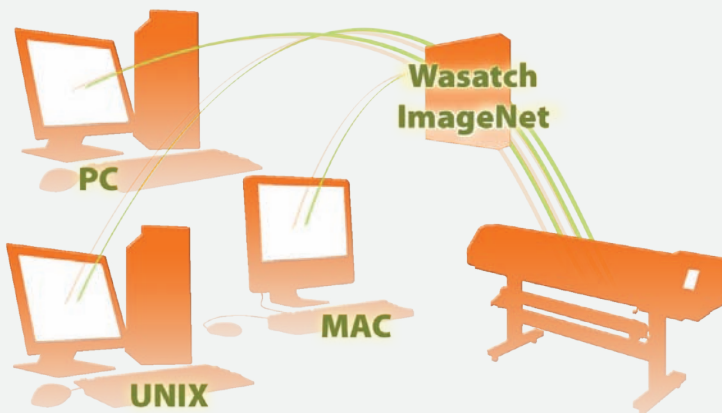


Saves media, saves time.

SUPER-EASY CUT



Saves the most time.

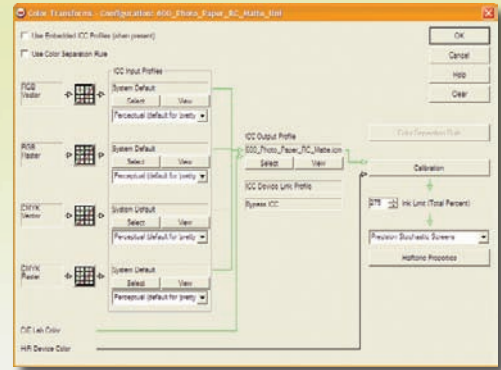


POWER BEYOND THE RIP STATION

With Wasatch ImageNET™ any PC, Mac, or Unix workstation on your network can interface with the RIP quickly and easily. Networked users can submit jobs to the RIP by printing directly from Graphic Applications or simple drag-and-drop operations. Also use Wasatch ImageNET with regular web browsing software to check job status, manage queues, and perform automatic file-prep functions like scaling, mirroring and rotation.

CLARIFY YOUR COLOR

With SoftRIP, ICC color goes from puzzle to piece of cake. The Master Color Transforms screen straightens out the maze of profiles, halftones, calibrations and more--showing you exactly how your color goes from file to printed page. Color transforms gives you easy access SoftRIP's expert color tools, and when you change selections the interactive flowchart displays the impact on your overall color process.



PRECISION STOCHASTIC



OTHER RIP SOFTWARE

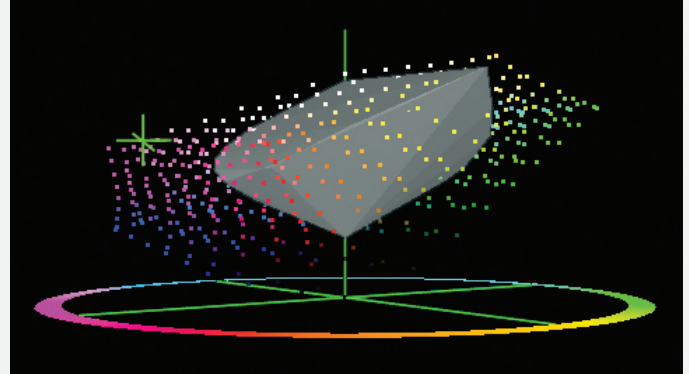


BETTER QUALITY FASTER SPEED

Wasatch is the RIP leader in halftoning technology for superior image quality. Our award-winning Precision Stochastic Screens (PSS) produce perfectly even gradations without a hint of stair-stepping. Plus, since PSS is based on efficient algorithms developed exclusively by Wasatch, it's faster than other RIP methods.

KNOW MORE BEFORE YOU PRINT

Wasatch's advanced gamut management tools let you set customer expectations you know you can meet while reducing wasted ink and media. Simply click on a color and launch the 3D profile viewer to see your color plotted against the available gamut from your output device and selected media. Use it to communicate color issues with customers and select profiles with desired gamut characteristics.



MATCH COLORS ON THE SPOT

With SoftRIP you get the most advanced spot color feature set available with any RIP. Create your own database of frequently used spot colors by specifying shades using RGB, CMYK, or L*A*B* or by automatically reading a color sample with a handheld colorimeter. Use the Optional Color Atlas Generator to take your color matching to the next level, ensuring perfect color matching on your desired media every time.



DIGITAL PRINTING EXCELLENCE

TOOLS FOR EVERY LEVEL OF EXPERTISE

Wasatch SoftRIP gives you the perfect combination of easy operation and sophisticated features. New users will be up and running in minutes. Printing experts will find the intricate controls and innovative tools necessary to implement even the most complex production and color workflows for unparalleled quality output. Whatever your printing goals, you will succeed with SoftRIP.

Easy Color Tools for Great Out-of-the-Box Color

Thousands of plug and play Imaging Configurations for superior out-of-the box color

Easy Color Correction Curves to make adjustments as you would in standard design applications

Gamut warning for colors that cannot be printed with current profiles

Color control in four different input color spaces to get colors that pop and match SWOP in the same job

Master Color Transforms flowchart shows users how their color moves from file to printed page

Simple Workflow Features Get You Up and Running Fast

Live View Master Queues Screen lets you manage all queues in your production environment in real-time

Smart nesting gives you the power to save time and media with automatic layouts, fast previews and easy operations

Streamlined interface that makes navigation a breeze—all features are only a click or two away

With One-Minute Setup you pick your printer, Imaging Configuration and connection and you're ready to RIP

Easy tools for rotating, resizing and mirroring with nearly instantaneous preview display screen update

Interactive real-time preview and detailed image attribute display allow for accurate image adjustments

True cropping feature RIPs only selected areas instead of entire page, speeding up processing

Shortcut keys, drag and drop operations, and icon tool bars to speed usage

Sophisticated Color Management for the Advanced User

Specialty input profiles for RGB and CMYK produce larger density ranges and brighter colors

New intelligent ink limiting to maximize color gamut and profile media with poor ink retention

Precision Stochastic Screens halftoning provides highest quality output with smooth gradients and fast RIP speeds

Calibration utility is compatible with all major color measurement instruments

View trapping in Separation Proofs with DCS2 support

Advanced tools for indexed and spot colors, with Spot Color Capture to print colors read by hand-held colorimeters

Non-color support for white ink underlays, overlays and spot color replacement

Advanced Workflow Features Put the Power in your Production

Unlimited hotfolders for direct printing from any application or platform

Automatic file preparation from any workstation with hotfolderbased scale, mirror and rotation capabilities

Wasatch ImageNET™ to print directly from networked Mac, PC or Unix workstations

Fast processing speeds with advanced halftone screen options and properties

Twain32 interface allows direct capture of images from a scanner or camera

Advanced tiling features for superior flexibility

Archiving feature lets you save jobs from print queues